

System Corlo

High quality materials and elegant design

Real glass surfaces and chrome plated metal frames make the touch displays, push buttons and power outlets of *System Corlo* a highlight of high class interiors.

Corlo adapts to the room

The *System Corlo* frames are available with a matt or glossy finish, custom colours for an individual interior design are also possible. Your colour concept can be further customised with the Corlo Touch's variable ambient lighting. For display, push button and power outlet, you have a choice of white or black glass surfaces.

Corlo is easy to install

All components of *System Corlo* are installed in standard switch sockets. Frames are available as 1-, 2- or 3-gang version.



Corlo Push Button M2-T, matt



Corlo Power Outlet, matt



Corlo Push Button M1-T, glossy



Corlo Power Outlet, glossy



Corlo Touch KNX



elsner®
elektronik

Corlo Touch KNX

Touch Switch and Display for 

Touch Switch for Illumination, Blinds, Scenes ...

Switches when the surface is touched. The device reacts instantly on approach, when in energy-saving sleep mode.

Intelligent Operating Panel for Room Automation

Graphical menus for setting of shading, ventilation and room conditions. Automatic functions can also be configured in the ETS.

Info Screen for Photos, Messages and Measured Values

High-resolution 3.5 inch display with brightness sensor for automatic adjustment of the display to ambient brightness. Shows current weather data, room data or messages from the KNX bus system. Personalised screensaver with your own photos.

Corlo Touch KNX features overview

- Proximity sensor
- Variable ambient lighting
- 10 pages can be configured individually, with areas for operating elements and display
- 5 automatic channels
- KNX connection for data transmission
- 4 inputs for binary contact or temperature sensor
- Micro SD card slot (data storage for photos and icons)
- USB interface
- Operating voltage 12...24 V DC

Extended model Corlo Touch KNX WL

- WLAN connection
- Display of network content (e. g. defined web sites, camera footage, visualisation)
- Smartphone control



elsner®
elektronik

Push Button & Power Outlet

for System Corlo

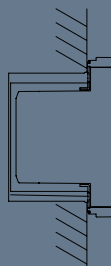
Corlo Push Button M-T

Single or double push buttons with integrated room temperature sensor. The temperature value can be interpreted by the display Corlo Touch KNX. The push buttons are suited for conventional electrical installation, relay controls and PLC. By using push button interfaces, such as Elsner KNX B4-UP, the *Corlo M-T* become KNX bus push buttons.

Corlo Power Outlet

The *System Corlo* is completed by a matching power outlet. An integrated increased contact protection makes the SCHUKO power outlet child-proof. Push buttons Corlo M-T and power outlet are applied in the conventional, wired electrical installation. Special solar push buttons are available for the Elsner wireless protocol.

Version 09.07.2013. Errors excepted. Subject to technical changes.



Plan Corlo Touch in switch socket

