

## Product Catalog

For intelligent building automation solutions

### Your Success is our Business

Steady advancement and innovation of our products is ensured due to intensive contact with our costumers. More than 1.500 successfully realized projects guaranty that your project is going to be a success too.

We gladly provide price lists, personal offers and detailed product information according to your requests.

Don't hesitate to ask any questions.  
Our team is happy to help you making your project a success.

**We are looking forward to hearing from you!**

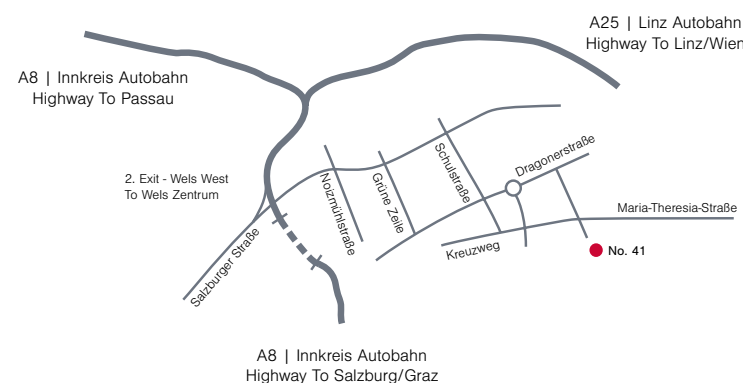
NETxAutomation Software GmbH  
Maria Theresia Straße 41/TOP 10  
4600 Wels | Austria

**T** +43 (0) 7242 252 900

**F** +43 (0) 7242 252 900 - 21

office@netxautomation.com

www.netxautomation.com



Member of the KNX Association  
Member of the OPC Foundation







The NETxAutomation Software GmbH, founded in 2001, is a globally operating Austrian company that develops software solutions for building automation. As a shareholder of the KNX Association and member of the OPC Foundation and many development agreements with the University of Technology in Vienna, all our solutions are based on international standards and future oriented technology.

2008 our NETx KNX OPC Server was recommended by the KNX Association. We are pleased with this recommendation as it rewards our commitment to steady development, stability and availability.

Our principles of business - innovation and reliability - can be found in all our products. Leading technology is used for our software solutions and our IT know-how combined with open system integration architecture allows central monitoring and controlling of even complex buildings. In more than 30 countries worldwide our software is installed. The diversity of realized projects ranges from family homes to the largest projects in the world.

Our sales partners are electrical consultants, electricians and system integrators for KNX all around the world. We offer our partners attractive conditions and excellent sales support.

# Product Overview

innovative software solutions  
for your building automation

<b>NETx</b> KNX OPC Server	
Your door to the world of KNX	page 5-6
<b>NETx</b> Voyager Visualization	
For your personal look	page 7-8
<b>NETx</b> Voyager BMS Server	
For KNX, BACnet and ModBus	page 9-12
<b>NETx</b> MaRS	
Optimized management system for resources	page 13-14
<b>NETx</b> Shutter Control System	
Intelligent shading	page 15-16
<b>NETx</b> KNoX	
Visualization with Android	page 17
<b>NETx</b> Server Interfaces	
Extensions for OPC & Voyager BMS Server	page 18
<b>NETx</b> OPC Bridge	
Data bridge between systems	page 18
<b>NETx</b> Projects	
Extract from our references	page 19-20





## Main Features

### Scalability

Up to 1.000 KNX IP gateways and more than 100.000 data points can be managed.

### Performance

The data throughput for central monitoring increases according to the number of gateways used.

### Central Monitoring

The advanced OPC studio offers monitoring of telegrams and values of data points.

### Redundancy

For higher security you can connect multiple OPC Servers - Main/Backup solution.

### LUA Script Engine

Complex logic demands can be realized easily with LUA Scripts.

### Simulation Mode

Test your server's configuration without being connected to any KNX hardware.

## OPC Server Versions

### NETx KNX OPC Server 3.5 UnifiedDriver

- for all KNX IP Router and KNX IP interfaces: ABB, b.a.b-tec (eibnode), Berker, Gira, Merten, Siemens, ...
- up to 1000 IP gateways are supported
- active monitoring of physical devices

### NETx KNX OPC Server 3.5 Direct(KNX)

- for all KNX interfaces and router: USB, RS232, EIBLib, NETIP Tunneling, NETIP Routing
- maximal one gateway is supported

# NETx KNX OPC Server

Your door to the world of KNX

The NETx KNX OPC Server solution is the heart of modern KNX projects - all data are centrally monitored and managed here.

The system consists of two essential parts:

The **OPC Server** and the **OPC Studio**.

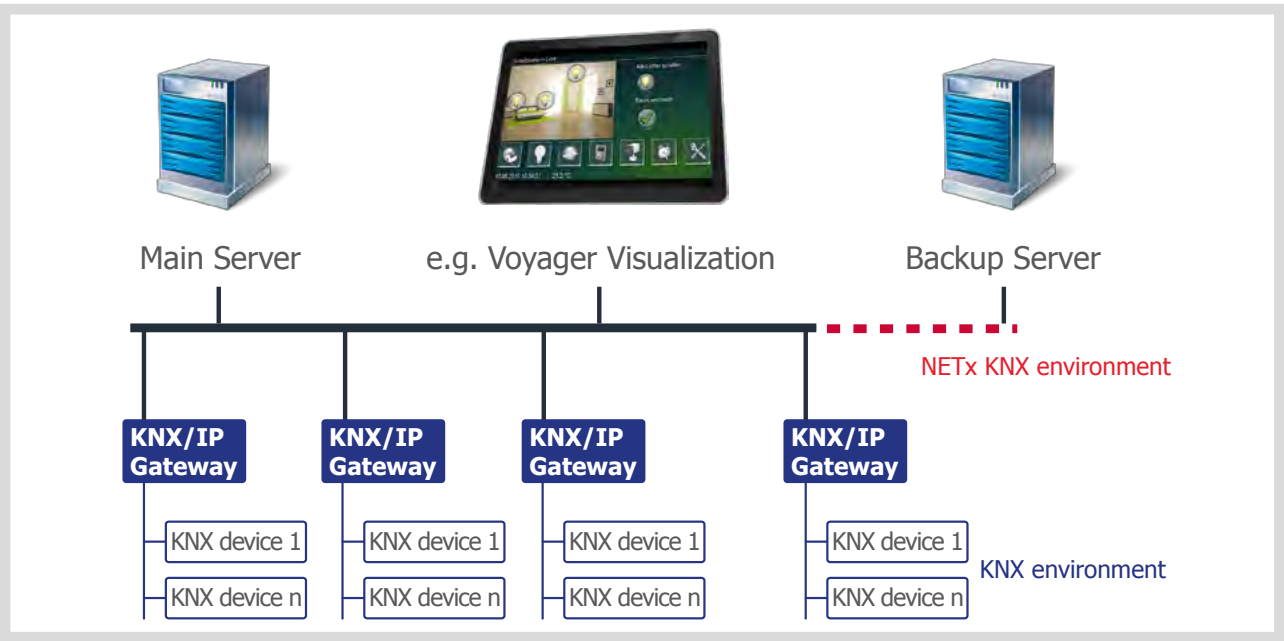
The OPC Server is an autonomous platform that executes and controls all operations in the KNX bus system. The OPC Studio with its user friendly GUI represents the interface between server and administrator.

Import function of ETS® files, full monitoring of telegrams with included plain text description and advanced filter functionalities are just some of the comfortable features that guaranty fast progress in your project.

Furthermore the system allows you to control and - connected with a fitting OPC client - visualize a KNX environment of any size.

This server solution is developed as an open, reliable and user friendly system and already successfully installed in more than 1.500 projects all around the world.

Our OPC Server emerged to a standard of quality and was recommended by the KNX Association. Several projects working with NETx KNX OPC Server solutions were awarded with the KNX Award.



Example of an OPC structure



## Main Features

### Creating Projects

The Drag & Drop functionality makes it easy and fast to create your own challenging projects in a short time. Furthermore there are libraries which allow you to re-use your created components again and again.

### Advanced Functions

Calendar- and time functions  
Scene- and event definitions  
User- and alarm management  
VB Script Processor  
Pop-Up windows  
and many more!

### Multi Project Editor

All visualization projects can be created with one Editor. No matter what platform the visualization runs on, build a visualization for windows PCs, SmartClients for the NETx Voyager BMS Server (iPhone, iPad, WebClient,...) or NETx KNoX for Android - it's just one editor.

### Unlimited Possibilities

From family homes to airport projects - with the Voyager you can create the most various visualizations. Almost every customer requirement is realizable.



The high-performance Voyager Engine allows the central control of large projects.



You decide about how detailed you want to visualize your project. All popular picture formats are supported. The Voyager leaves nothing to be desired.

# NETx Voyager Visualization

For your personal look

With NETx Voyager Visualization building automation has never been as creative as it is now. You nearly have unlimited graphical possibilities to visualize your project in any imaginable way.

The easy way of handling and creating a project by drag & drop result in high customer satisfaction. Due to that NETx Voyager Visualization can be used in all kind of projects for building automation.

No matter if you want to visualize a control for window blinds, lights, heating, cooling, hotel management systems or a display for the energy consumption of electric devices, we offer you a professional, reliable and user friendly software solution for your individual visualization.

## Voyager Visualization Versions

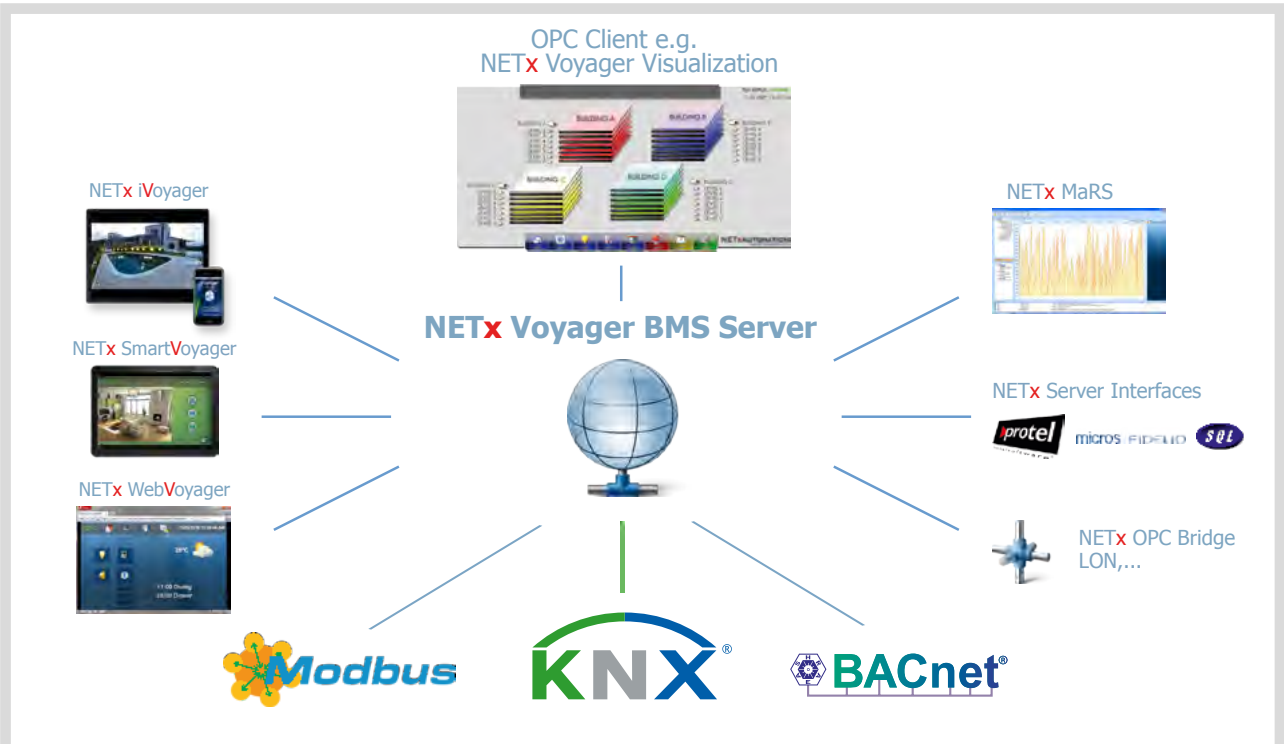
### NETx Voyager Visualization UnifiedDriver

- for challenging and large projects
- connection with a OPC Data Access 2.0 Server mandatory
- comfortable VNET connection to the NETx KNX OPC Server and NETx Voyager BMS Server

### NETx Voyager Visualization Direct(KNX)

- Stand Alone solution for small projects
- all official KNX protocols are supported
- import of your ETS® files
- direct connection to KNX over serial-, USB- or IP-interface





NETx Voyager BMS Server  
nearly unlimited integration possible

- **OPC Server**  
All functionalities of the NETx KNX OPC Server are included in the Voyager BMS Server.
- **Supported Bus Systems**  
Besides KNX this server can also directly communicate with BACnet and Modbus. Any information can be exchanged between the systems and other systems can be integrated with the NETx OPC Bridge as before.
- **Data Storage**  
The included data base allows recording and providing all values for any further usage.
- **Interaction Protocol**  
Any interaction of all users of clients or sub systems can be logged.
- **Logic**  
With LUA Scripts you can realize complex dependencies, extensions and your own apps. The server's functionality can be extended as you wish.
- **Redundancy**  
For higher security you can connect multiple OPC Servers - Main/Backup solution.
- **Web Server**  
A integrated web server offers worldwide access to your visualizations with NETx WebVoyager Clients.
- **VNET Protocol**  
There is an encoded and fast VNET connection between server and visualization clients.
- **Central SmartClient Management**  
Administration, analysis and updating of all visualization clients centrally.
- **Visualization Editor**  
Create your visualization projects with the included NETx SmartVoyager Editor.
- **Server Interfaces**  
Integration of other vendor's systems (door communication, hotel management, IP telephones, monitoring systems,...) with server interfaces possible.

NETx Voyager BMS Server  
BMS Server for BACnet, Modbus and KNX

This Server is the central solution for large hotel projects, complex of buildings, lighting systems and management of resources. In combination with our other products, the Voyager BMS Server offers perfect solution for your building automation.

The system consists of the NETx Voyager BMS Server, which can communicate directly with BACnet, Modbus and KNX, and our possible clients for visualization including Data Access clients.

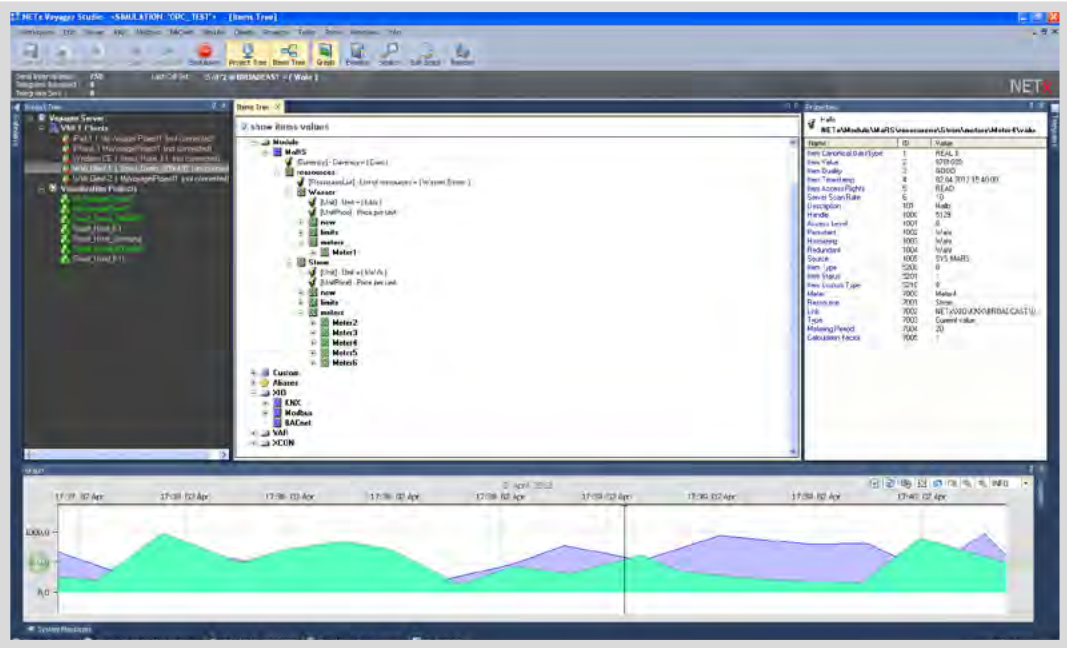
The central data management and monitoring of your bus system is an automatic process in the Voyager BMS server. In the corresponding Voyager BMS Studio the configuration and editing of functions take place.

The well-known functionalities, stability and reliability of the NETx OPC Server also pertain for the Voyager BMS Server. For your central BMS visualization you can connect as many OPC clients as you want to the Voyager BMS server.

Voyager BMS Server

NETx Voyager BMS Server

- für KNX IP Router and KNX IP interfaces:  
ABB, b.a.b-tec (eibnode), Berker, Gira, Merten, Siemens,...
- for BACnet IP interfaces:  
ABB, Beckhoff, Honeywell, Siemens, Wago,...
- for Modbus IP interfaces:  
ABB, Beckhoff, Honeywell, Schneider Electric, Siemens, Wago,...



Voyager BMS Studio



# NETx Voyager BMS Server

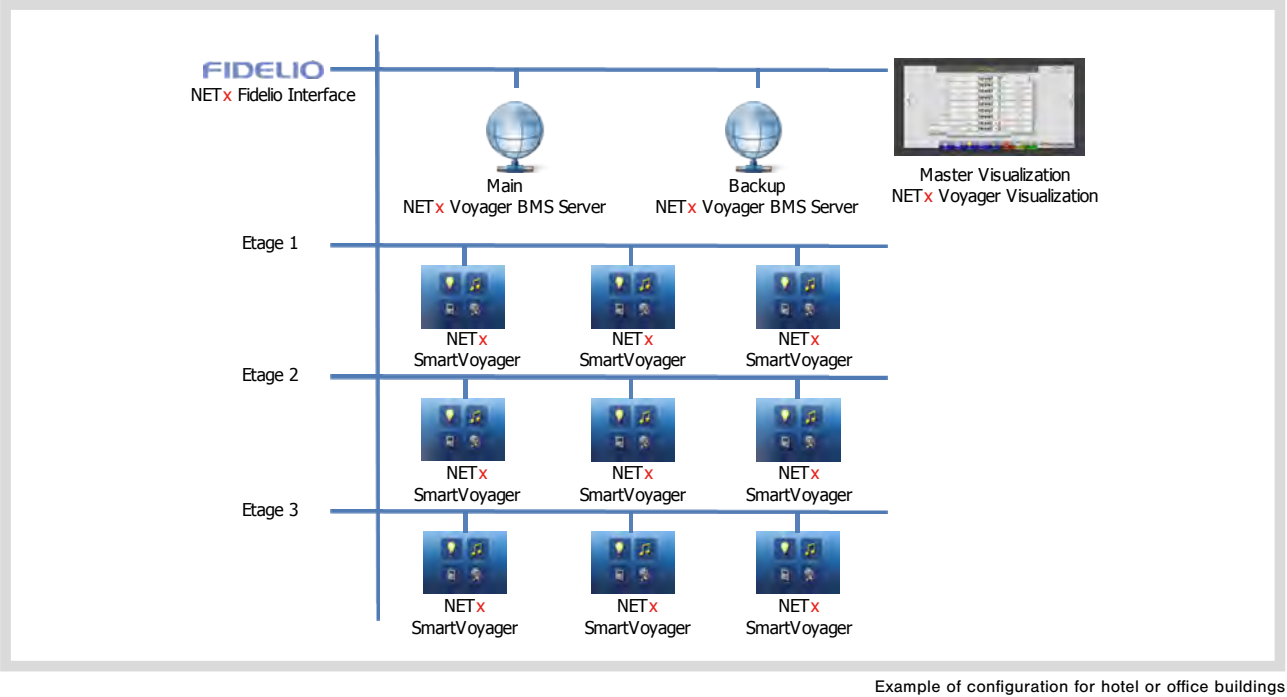
Global visualization

Due to the variety of available NETx Voyager Smart Clients you can access, query and modify your visualization from all around the world at any time. For the first time large office or hotel projects are easy to configure with web based or mobile devices.

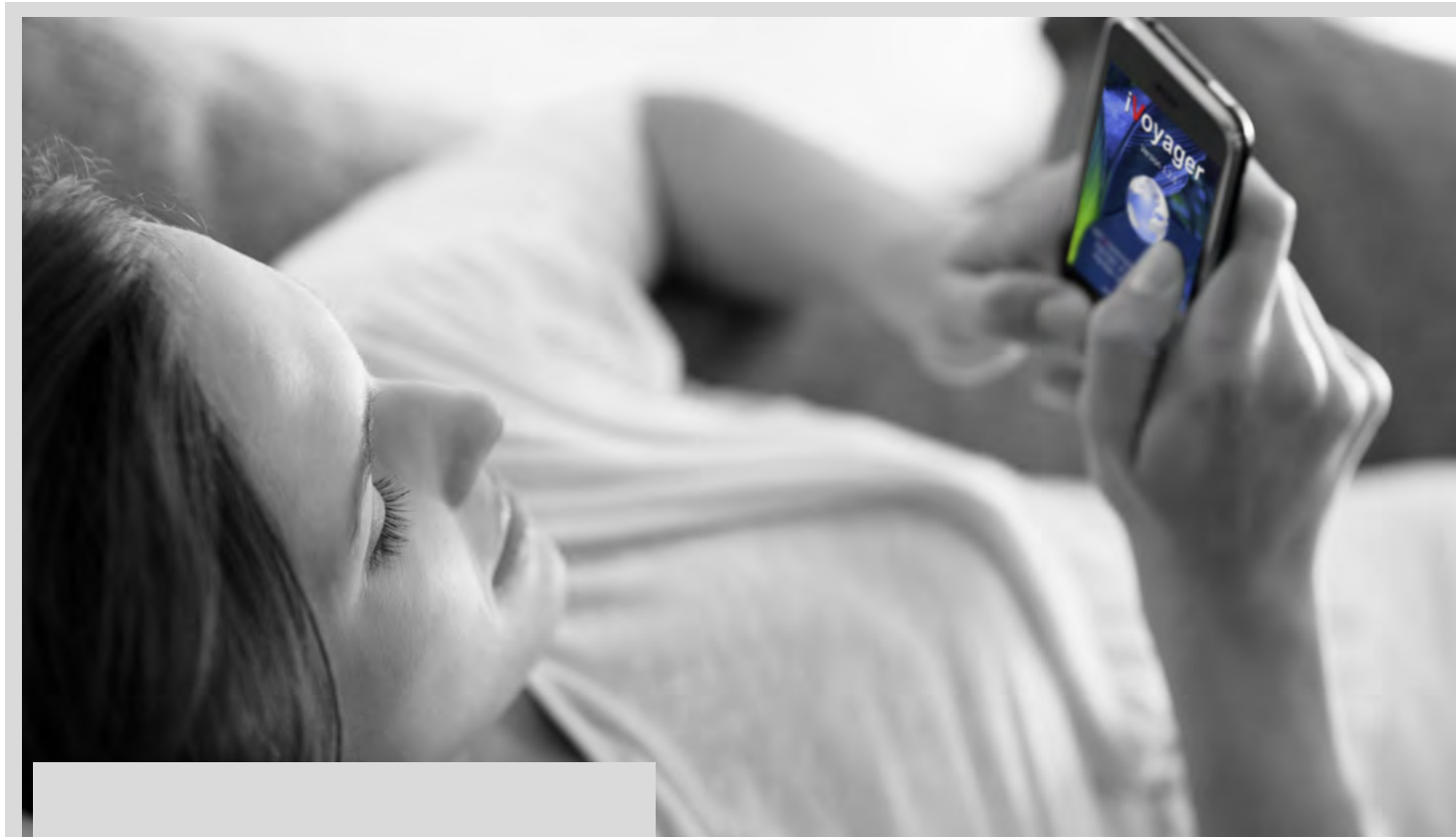
Also the combination with the high-end visualization NETx Voyager OPC version is possible and recommended, so you can use the full functionality of alarms, calendar, Eventor, processor, and the scene management.

Large projects, which use different management systems for lighting, heating/cooling control and shading solutions, can be managed via the BMS Voyager server on a common platform. A professional solution with individual control comfort can be achieved thereby.

The necessary NETx SmartVoyager editor for designing smart visualizations is included in the Voyager BMS server.



Example of configuration for hotel or office buildings



## NETx SmartVoyager

This client was developed especially for small touch panels, smart tablets and smart phones, based on Windows CE and Windows Mobile.



## NETx iVoyager

The NETx iVoyager runs on Apple platforms like iPhone, iPad and iPod Touch. You can download this software in the Apple Store for free.



## NETx SmartVoyager Editor

Every visualization project for all NETx Voyager Smart Client is created with an editor - the editor NETx SmartVoyager. It offers maximum user-friendliness by using the drag & drop functionality. Libraries and templates are included and can be expanded. Even your own buttons can be created with the editor NETx Button Editor.

## NETx WebVoyager

The NETx WebVoyager enables platform-independent access to your visualization over web. There is no additional installation required. Only a browser is needed to create a password protected connection.



### Supported Browsers

- Apple Safari 5
- Google Chrome 18
- Microsoft Internet Explorer 9
- Mozilla Firefox 11
- Opera 11

Main Features

Data Acquisition

Acquisition, analysis and evaluation of measurement data and consumption data of any resource.

Cost Calculation

Based on any cost structure and measurement data cost analysis can be performed.

Evaluation

Data are presented in form of tables and graphs. With the built-in report generator you can create your individual reports.

Open System

The connection of counters of different systems (KNX, BACnet, Modbus) is possible via the BMS NETx Voyager server. Other systems can be connected via other OPC servers.

Data Export

Easy export of data enables the transfer to foreign accounting systems.

Your benefits:

- central data management
- realization of resource transparency
- optimization of costs
- reduction of consumption
- reduction of delivery costs
- reduction of relevant additional costs
- reaction to variability possible
- steady monitoring of costs
- data base for reimbursement
- awareness raising of resources
- alarms when passing over/falling below predefined limits

NETx MaRS

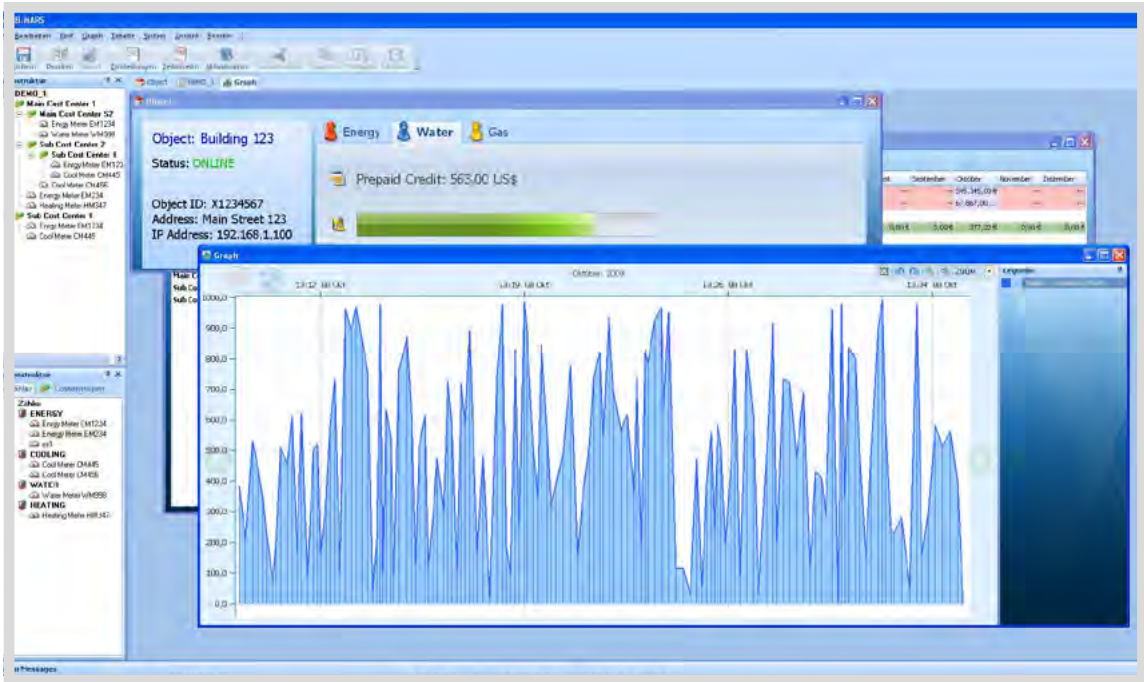
Optimized management system for resources

The **Metering and Reporting System** is a modern, user-friendly system that analyzes and displays measurement data that is stored in a data base.

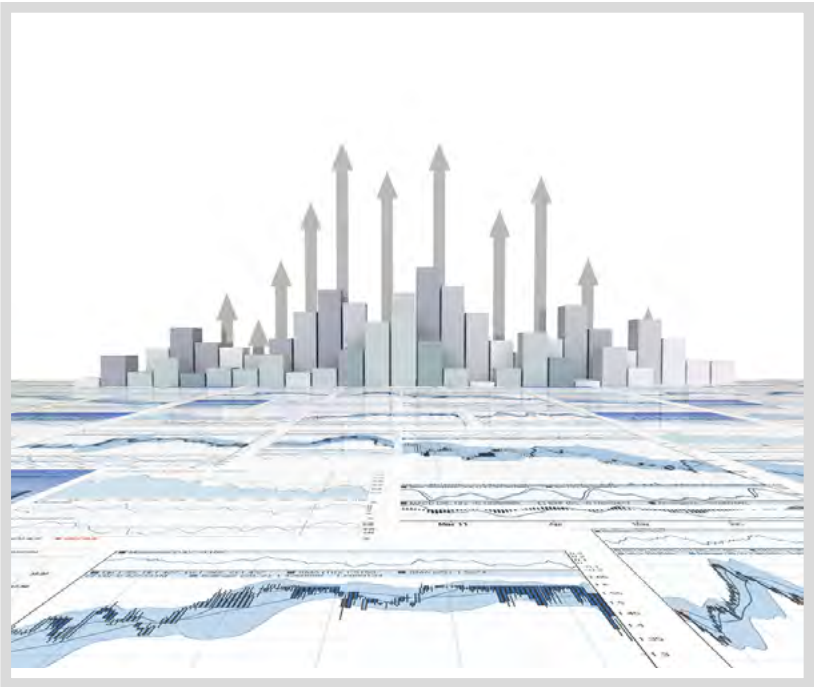
It is a central companywide data collection from meters and other measurement devices. These data for energy, water, air or gas is collected continuously along with other state and measurement data from all areas of resource allocation.

By measuring the data of consumption in various areas, it is possible to reduce operating costs sustainably. In addition, an extensive data base for cost-accounting systems and further use is provided electronically.

NETx MaRS Management System for Resources encourages the economic and ecological use of resources.



Presentation of resource consumption in form of a graph



Main Features

**Easy Handling**

flexible, adaptable and integratable  
No programming of actuators required.

**Weather and Time Data**

Controlling due to weather and time possible

**Automatic**

Automated raising and shutting blinds when values pass over or fall below predefined limits.

**3D Design**

Inclusion of the 3D geometry of the building and the shadows of neighboring buildings.  
Simulation of shadows for the whole building possible.

**Designed for Large Buildings**

Control your window blinds one by one or in groups.

Designed for large buildings

This controlling system consists of three parts:

- **Shading System Server** (automatic for shading)
- **Manager** (GUI of the console)
- **Data Server** (NETx OPC Server)

The shading system server is the essential part of the system, it is responsible for the overall control. The manager can be interpreted as a management interface and connection between the server and administrator.

In the Enterprise version of NETx Shutter Control System the 3D simulation is included. For the calculation electronic building plans are required.

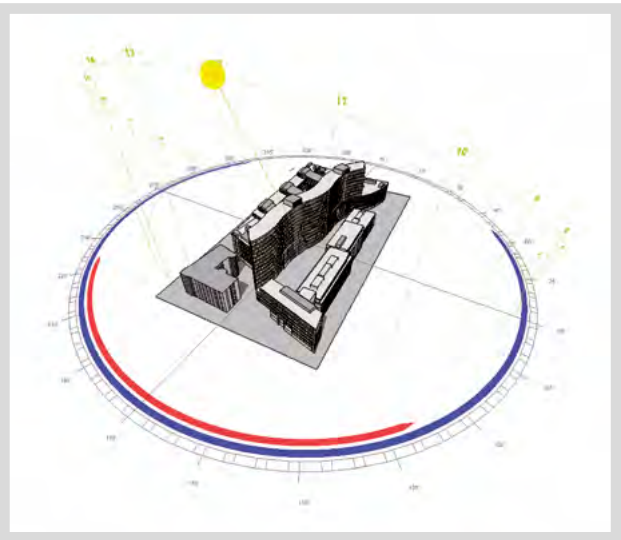
# NETx Shutter Control System

Intelligent shading

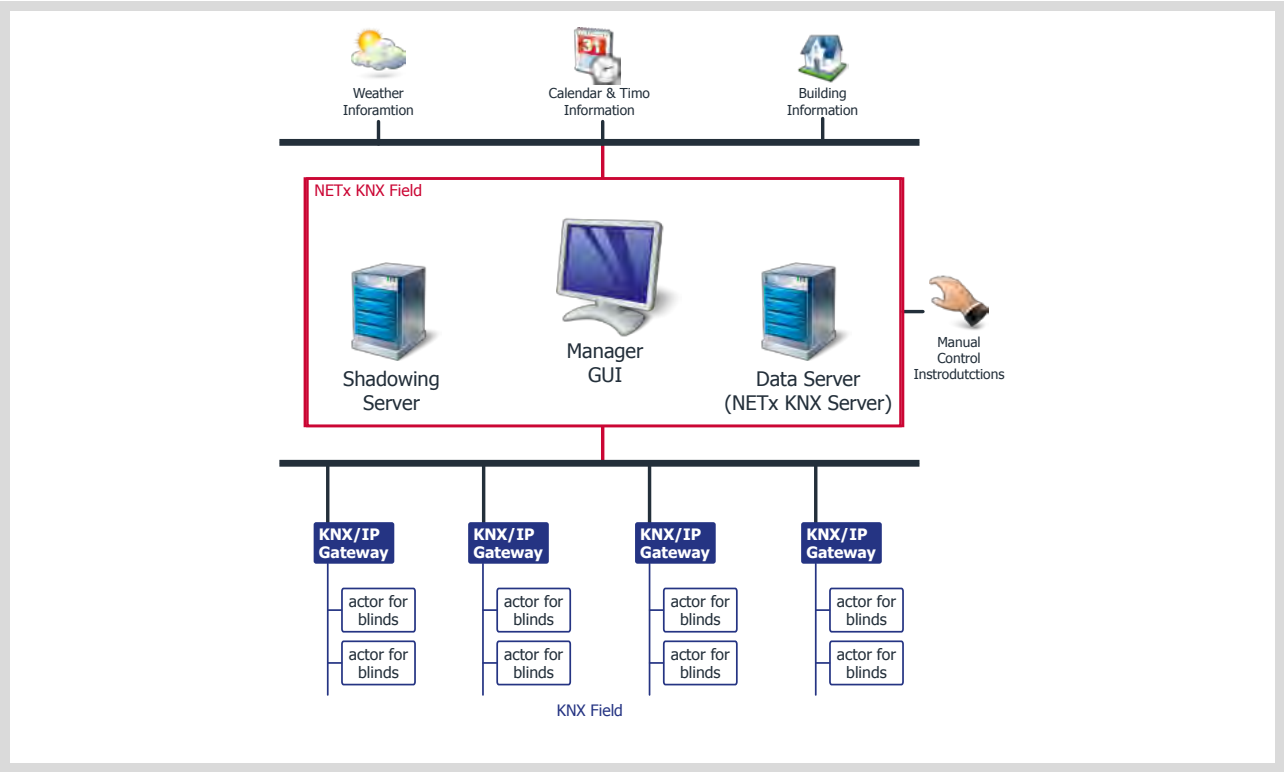
Das NETx Shutter Control System is an automatic shading system that controls KNX blinds at any time of the year, weather, position of the sun and 3D building geometry.

The input data for the shading system come from sensors of meteorological stations. All other Shutter Control commands (wind alarm, maintenance mode and manual/automatic switch) take place in system.

In particular NETx Shutter Control System is suitable for larger office buildings. Thousands of blinds can be managed and visualized centrally. Calculated once, the data of the sun's annual course, including the data of shadowing due to surrounding buildings, are integrated in the system.



3D Simulation of the sun's annual course  
Project Frankfurter Welle



Example of a MaRS system structure



In NETx Shutter Control System an automatic blinds tracing is integrated. It adapts each sector of the system to the respective position according to the sun or the shade from other buildings.

The slope of the blinds is adjusted according to the sector's elevation and azimuth angle of the sun. This corresponds to five different slope positions. The beginning and the end of the time interval in which sun rays can reach a certain window, is calculated centrally once.

By using NETx Shutter Control System, you can create the best possible lighting conditions without glare!



# NETx KNoX

Visualization for Android



With this new innovative software solution from NETxAutomation you can control your KNX project with the modern and popular Android™ devices now. This new system supports all NETIP KNX protocols. The software requires no additional server - independent controlling of your KNX project.

The system offers maximum flexibility for designing your visualization. Of course the necessary editor is free. Design your project easily on a PC according to your ideas by using the drag and drop functionality, included graphic libraries and the convenient button editor. After that you can export your project with few clicks on your Android™ device.

With this development NETxAutomation takes one further step to an open and independent system.

## Main Features

### Reasonable

Control and visualize your project with one device. No additional server required - Use your existent hardware.

### Flexibility of Design

Your building, your vision, our mission. Let your creativity run wild.

### Mobile

Your building control in your pocket.

### Project Type

The perfect solution for your villa, hotel suite or family home.



# NETx additional Products

Extensions

## NETx Server Interface

Extensions for OPC & Voyager BMS Server

With extension modules for our products you can connect other systems to our software solutions.

**micros FIDELIO** NETx Fidelio/Opera Hotel System

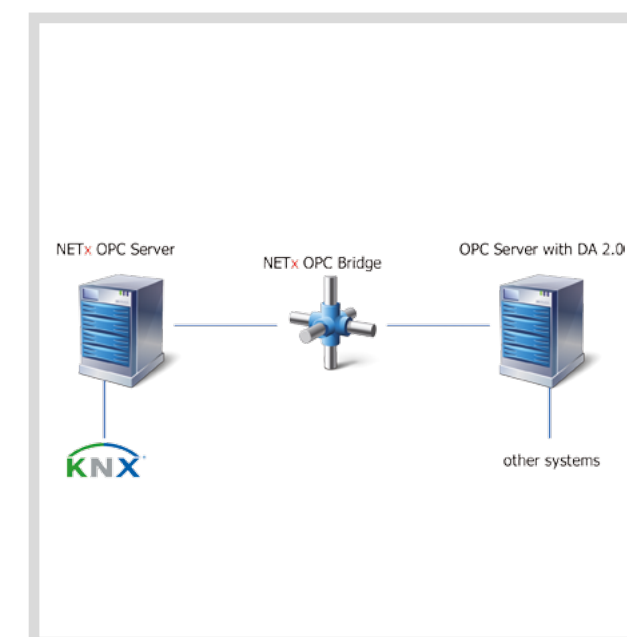


NETx Protel Hotel System



NETx SQL Data Base

As a software specialist we gladly offer you further interfaces according to your requests.



Example of configuration

## NETx OPC Bridge

OPC data bridge

The NETx OPC Bridge allows the connection of several OPC Servers based on Data Access 2.0. Therewith it represents a bridge between KNX and other systems. It can connect up to 100 OPC Servers and guarantees a secure and stable connection of defined data points.

With the OPC bridge you can connect other systems (e.g. LON, SPS, PROFIBUS,...) via OPC Servers to the world of KNX. So you can freely decide what system you want to work with.

# Your Project - Our Experience

from family homes to large projects  
more than 1.500 realized projects

## Airport Projects

- 01 | Airport Beijing Terminal 3, China**  
Size: 100.000 data points, 2 x 200 gateways  
Control of lighting, heating, ventilation and air conditioning with two NETx KNX OPC Server.
- 02 | Airport Pudong Shanghai, China**  
Size: 30.000 data points, 2 x 20 gateways  
Control of lighting with two NETx KNX OPC Server.
- 03 | New Bangkok International Airport, Thailand**  
Size: 15.000 data points, 2 x 10 gateways  
Control of about 60.000 lamps, heating, ventilation and air conditioning with two NETx KNX OPC Server. Visualized by NETx Voyager Visualization.

## Hotel Projects

- 04 | The Yas Hotel, Abu Dhabi**  
Size: 20.000 data points, 1 x 20 gateways  
Control of lighting with one NETx KNX OPC Server. Visualized by NETx Voyager Visualization.
- 05 | Gran Melia Resort & Luxury Villas Kreta, Greece**  
Size: 15.000 data points, 1 x 32 gateways  
Control of lighting and air conditioning with one NETx KNX OPC Server.
- 06 | Qasr Al Sarab Resort - Abu Dhabi, VAE**  
Size: 20.000 data points, 1 x 32 gateways  
Control of lighting and air conditioning with NETx KNX OPC Server. Visualized by NETx Voyager Visualization.

## Office Buildings

- 07 | Federation Tower, Russia**  
Size: 35.000 data points, 31 x 1 gateway  
Control of lighting and air conditioning with 31 NETx KNX OPC Server. Winning project of the KNX Award International Europe 2010.
- 08 | Frankfurter Welle, Germany**  
Size: 135.000 data points, 7 x 20 gateways  
Control of lighting with seven NETx KNX OPC Server. Shading of about 4800 windows with window blinds controlled by NETx Shutter Control System.
- 09 | Samsung Zentrale - Seoul, South Korea**
- 10 | Deloitte Zentrale - Copenhagen, Denmark**  
Size: 5.000 data points, 2 x 5 gateways  
Control of lighting with two NETx KNX OPC Server. Control of heating and ventiation with NETx Heating/Cooling System. For optimal shading the NETx Shutter Control System is used.
- 11 | ZVK Wiesbaden, Germany**  
Size: 56.000 data points, 2 x 260 gateways  
Control of lighting with two NETx KNX OPC Server. Visualized by NETx Voyager Visualization. Shading with 1420 groups of window blinds by the NETx Shutter Control System.

## Also realized with our products:

- Mercedes Technology Center - Daimler AG, Germany
- Abu Dhabi National Oil Company (ADNOC) Headquarter, VAE
- Ciragan Palace Kempinski Hotel - Istanbul, Turkey

